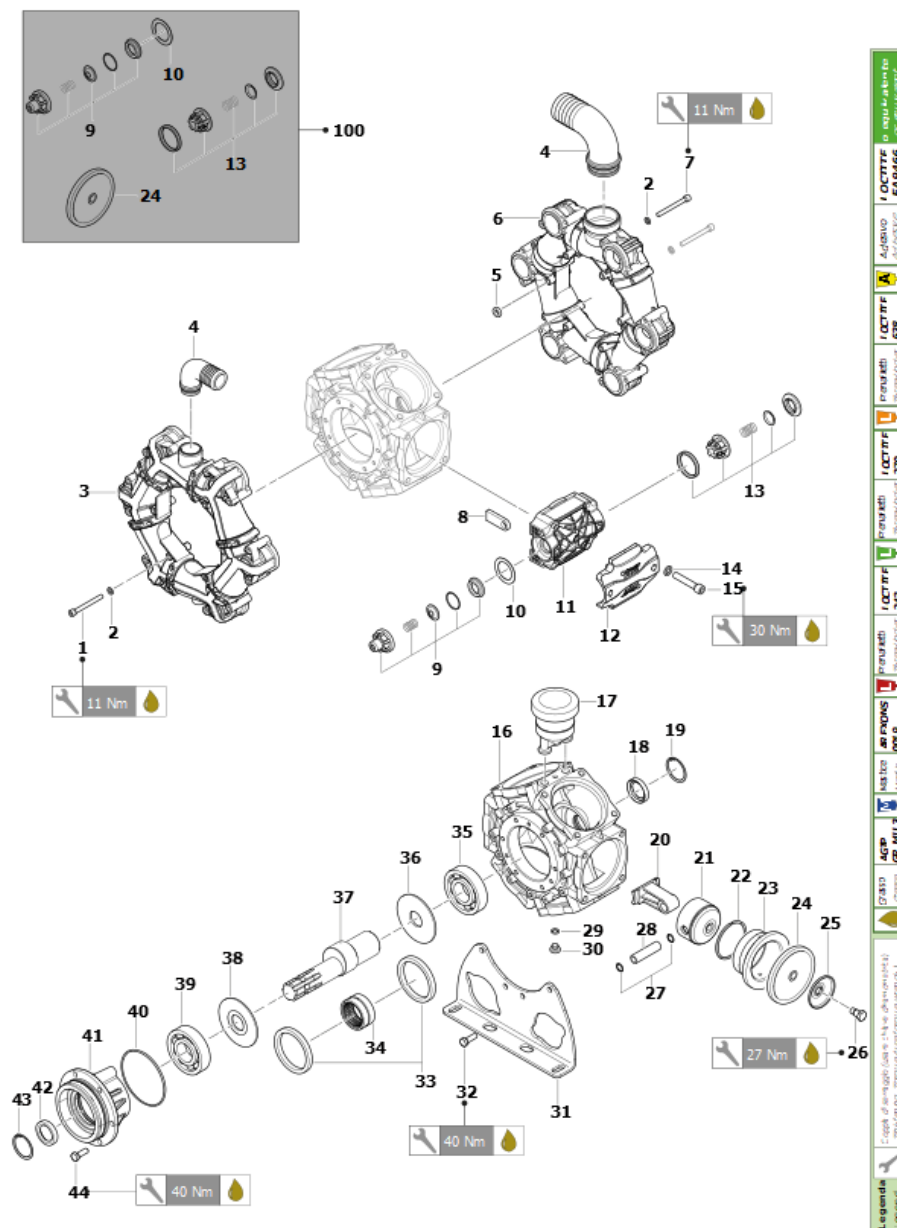


30087-00002: BPX270 AEP 1"3/8-DI25 DESMO (SERIE)

Validity date: 04/11/2025



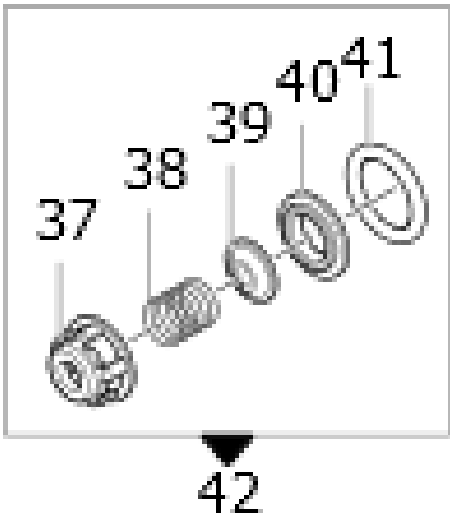
Pos.	Old code	Code	Description	Quantity
1	3609016900	00049-00405	VTCEI M 8X 60 UNI5931-8.8 GEOMET	12
2	2811009900	00052-00044	WASHER 8,4X15X1,6 DIN433-INOX A2	36
3	0501035200	10002-14422	K COLLT MAN BPX270	1
4	0199256800	10001-07194	K SFUSI BPS200 (STANDARD 2)	1
5	0601045600A	00035-00413	DIST D8,2XD18X5 PA66 NERO	6
6	0501035100	10002-14421	K COLLT ASP BPX270	1
7	3609020600	00049-00443	VTCEI M 8X 65 UNI5931-8.8 GEOMET	24
8	1416000700	00050-00201	INSERTO FILETT. M8 X TE BP135	24
9	1220024700	10002-01604	GVAM BP115 VR BERTHOUD	6
10	0601034600	00035-00303	DIST D48,5XD33,5X2,5 AISI316-L	6
11	3218048300	00027-00436	TE BP115-BP135	6
12	0460007900	00039-01547	CALT X TESTATA BPX	6
13		10002-15891	Valve assembly BPX 140-270 ASP	6
14	2811009800	00051-00080	RT 10,5X18X2 R40 UNI 1750 GEOMET	24
15	3609018200	00049-00419	VTCEI M10X 60 UNI5931-8.8 GEOMET	24



Pos.	Old code	Code	Description	Quantity
16	0403058300	00041-00487	CARTER POMPA BPX270	1
17	1208001400	10002-00793	VOLUME COMPENSATOR ASSEMBLY	1
18	0019008900	00003-00075	ANL TEN 55X72X8 GP	1
19	3020000700	00002-00062	SEEGER I 72 C72	1
20	0205006700	00061-00095	BI 3 SET BP280	2
21	2409008100A	00016-00273	PIS D75	6
22	0020000900	00001-00972	ANL COMPR D75X2,5X3	6
23	0400007800	00021-00071	CAMICIA D75 BP280 ARANCIONE	6
24	1800017800A	00006-00091A	MEMBRANA POMPA DESMO D113 BP R6	6
25	0602004500	00019-00041	DISCO TEN MEMBR BP125	6
26	3605000500	00050-00011	SPECIAL SCREW M12X1,5 CH19	6
27	3020000100	00002-00058	SEEGER I 15 C72	12
28	3011000100	00053-00254	SPINOTTO D15X53	6
29	1210020900	00005-00569	O-RING 2,0x19	1
30	3200000100	00008-00001	TP E IN CH12 22MB NICHELATO	1
31	2400021500	00071-04862	PI POMPA BPX270	2
32	3607022100	00049-00169	VTE M10X 20 UNI5739-8.8 GEOMET	8
33	0010000300	00001-00948	ANL TB 109,5X93X10	2
34	0437000400	00045-00044	CRI 60X78X40 RNAO	1
35	0438009300	00045-00186	CUSC 1CSF 55X100X21-6211	1
36		00001-01714	RON TEN BI 35,5X108X4 BPX 270	1
37		00015-01477	ECC.SHAFT 1"3/8-DI25 BPX270	1
38	2813000500	00001-00983	CONN.ROD WASHER 35,5X108X4	1
39	0438011700	00045-00209	CUSC 1CSF 35X 80X21-6307 ZVL	1
40		00005-02584	GUOR 3,53X110,70	1
41		00022-02537	COP SUP PO CUSC MOT IDR BPX270	1
42	0019009100	00003-00077	ANL TEN 35X52X10 GP X AROT	1
43	3020001300	00002-00068	INNER SEEGER 52 C72	1
44	3607022600	00049-00173	VTE M10X 25 UNI5739-8.8 GEOMET	6

10002-01604: GVAM BP115 VR BERTHOUD

Validity date: 04/11/2025



Pos.	Old code	Code	Description	Quantity
37	1205004700	00024-00356	GAB VAM BP291-HS NERO	1
38	1802041100	00030-00331	MO VAM BP	1
39	3604003500	00024-00268	VAM BP291-HS	1
40	3009017200	00024-00142	SE VAM BP291-HS	1
41	1210041900	00005-00688	GUOR 6,0 X 37	1