

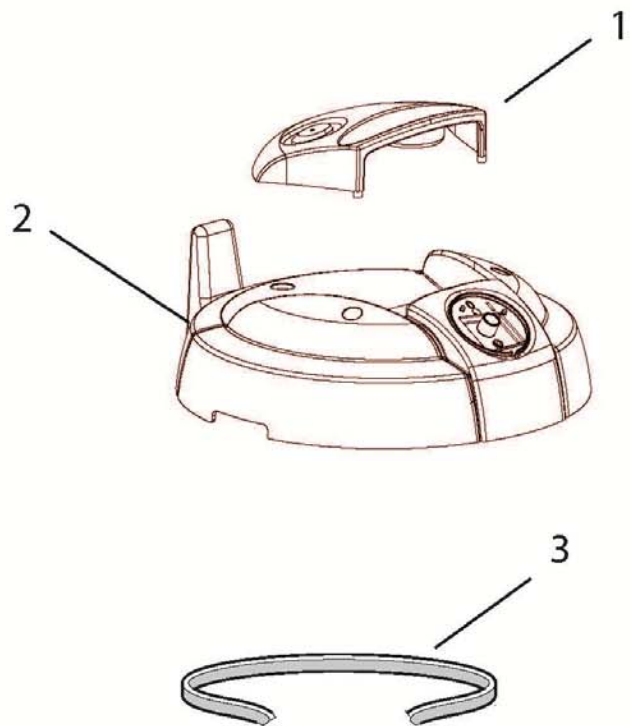
Aspiratore / Vacuum Cleaner **CVP 112 QUIET 220-240~50/60 -EU- COMET (DRY) 9356002000**

ASPIRATORE/VACUUM CLEANER CVP 112 QUIET 220-240~50/60 -EU- COMET (DRY) 9356002000

D82460015/01

Pos.	componente	Descrizione	Description	Qta
1	0460 0068	TESTATA CON MANIGLIA	HEAD WITH HANDLE	1
2	1817 0113	MANOPOLA INTERRUTTORE RAL.3020	RAL 3020 RED KNOB FOR SWITCH	1
3	1410 0162	INTERRUTTORE ROT. BIPOLARE 16A (0-1) C/PERNO L=15	ROTARY BIPOLAR SWITCH 16A (0-1)	1
4	0456 0511	CAVETTO DOPPIO 18AWG L=450 CON FILTRO ANTIDISTURBO	DOUBLE CABLE 18AWG L=450	1
5	1201 0281	GUARNIZIONE SUPERIORE MOTORE KC SILENT (PER 37550111)	KC MOTOR UP GASKET SILENT	1
6	4.215.0136	SPUGNA COIBENTANTE X MOTORE SILENT	SOUND-DEADENING SPONGE FOR SILENT	1
7	3.755.0111	MOTORE SPAZZ. MONOSTADIO 220-240V 50/60Hz 800W C/CAV.L=4	BRUSH MOTOR 220-240V 50/60Hz 800W DRY W/WIRE L	1
8	4.215.0132	GUARNIZIONE INFERIORE MOTORE KC SILENT	KC MOTOR LOW GASKET SILENT	1
9	4.215.0134	SPUGNA FONOISOLANTE X MOTORE SILENT	SOUND-DEADENING SPONGE FOR SILENT	1
10	4.208.0632	BASAMENTO MOTORE SILENT -GR.CH.- RAL.7046 (P82.0564)	GREY BASE FOR MOTOR (SILENT)	1
11	0456 0493	CAVO 2GX0,75MM2 H05VV-F L=7,5MT SP.SCHUKO ANTISPRUZZO	ELECTRIC CABLE H05VV-F 2X0,75 MT.7,5 SCHUKO PLUG	1
12	5.209.0207	SACCO FILTRANTE IN STOFFA + GUARNIZIONE (SILENT)	CLOTH FILTER WITH RUBBER (SILENT)	1
13	4.208.0666	GANCIO SILENT -GR.CHIARO- RAL.7046 (P82.0564)	GREY HOOK FOR SILENT	2
14	5.209.0214	FUSTO C/RUOTE X SILENT	TANK W/WHEELS FOR SILENT	1
15	4.208.0259	GUARNIZ.X DEFLETTOR WHISPER	GASKET FOR DEFLECTOR	1
16	5.209.0078	ASSIEME DEFLETTOR+TASTO+MOLLA X WHISPER/SAHARA	ASSEMBLY x SPRING+KEY+DEFLECT. x WHISPER V8	1
17	5.209.0210	TUBO FLEX MT.2 D.35 COMPLETO C/IMP.CURVA X BOOSTER/SILENT	FLEX 2mt D.35 COMPLETE (BOOSTER/SILENT)	1
18	3.753.0129	TUBO ALLUMINIO D.35 L=490	ALUMINUM PIPE D.35 L=490	2
19	0219 0029	BOCCH A LAN (D35) L=200MM	LANCE D.35	1
20	3.754.0281	SPAZZOLA COMBINATA C/RUOTE D.35 L=300 C/PARKING MOD.HE1.	COMBINED BRUSH WITH WHEELS D.35	1
21	3046 0046	SPAZ RETTANGOLARE D35 L=140MM	TOOL D.35	1
22	3046 0043	SPAZ ROTONDA D35	PLASTIC BRUSH D.35	1
30	5.212.0224	KIT 10 FILTRI RACC. X CVP 112 QUIET COMET CB8013298101900	KIT 10 COLLECTOR FILTERS FOR CVP 112 QUIET	1

D52090003/01



Aspiratore / Vacuum Cleaner **CVP 112 QUIET 220-240~50/60 -EU- COMET (DRY) 9356002000**

TESTATA CON MANIGLIA / HEAD WITH HANDLE

D52090003/01

Pos.	componente	Descrizione	Description	Qta
1	4.208.0636	MANIGLIA SILENT -GR.CHIARO- RAL.7046 (P82.0564)	GREY HANDLE FOR SILENT	1
2	4.208.0642	TESTATA SILENT X INTER.ROTATIVO GR.SC. RAL.7016 (PANT.432C) (GREY HEAD SILENT FOR ROTATIVE SWITCH	1
3	4.215.0131	SPUGNA X TESTATA SILENT 25x25x480 PPI 60	SPONGE 25X25X480 PPI 60	1

DATA VALIDITA'
DATE OF VALIDITY

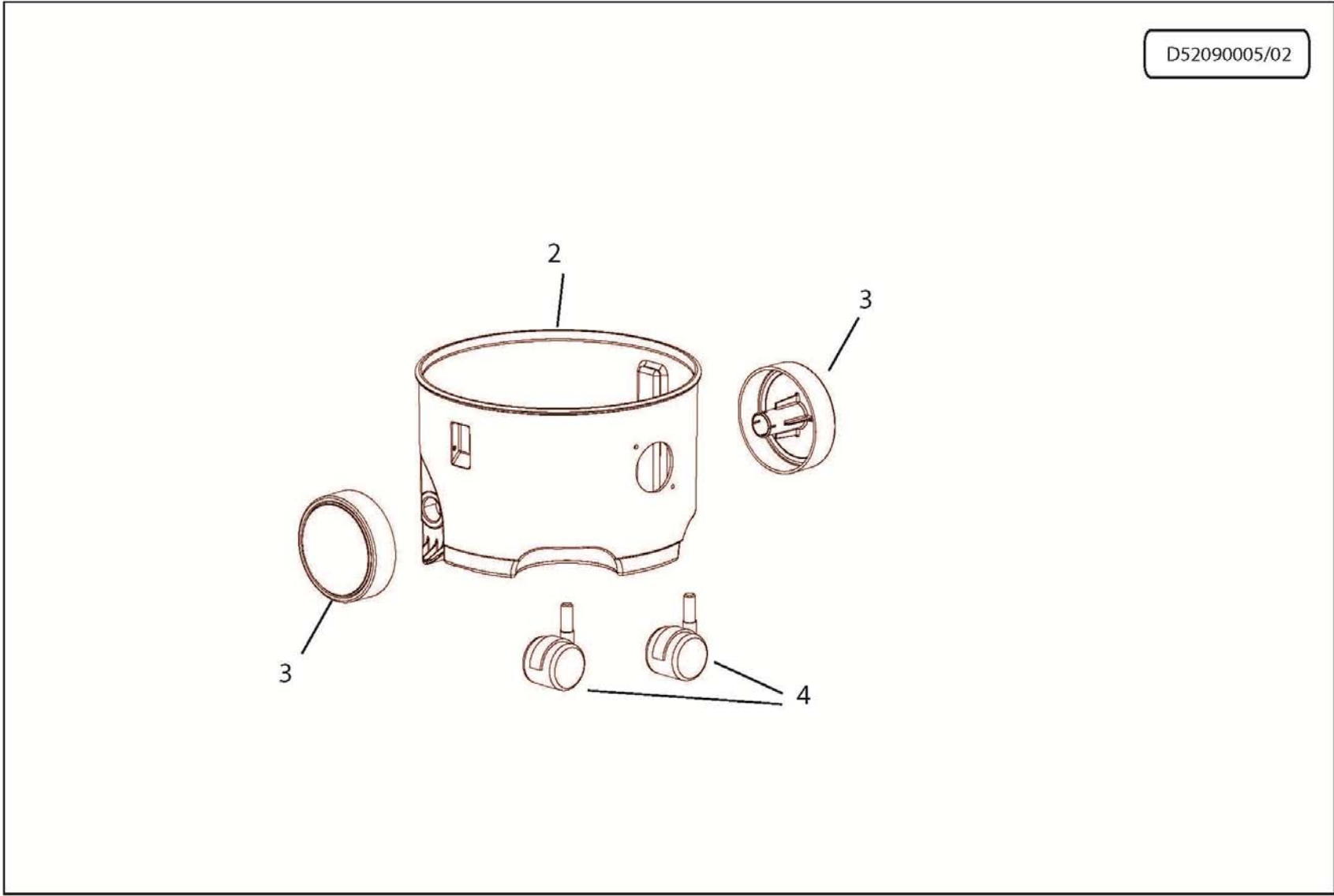
31/01/2019

DATA EMISSIONE
PRINTING DATE

31/01/2019



D52090005/02



Aspiratore / Vacuum Cleaner **CVP 112 QUIET 220-240~50/60 -EU- COMET (DRY) 9356002000**

FUSTO CON RUOTE / DRUM WITH WHEELS

D52090005/02

Pos.	componente	Descrizione	Description	Qta
2	4.208.0635	FUSTO SILENT GR.SC. RAL.7016 (PANT.432C) (P82.0564)	GREY TANK FOR SILENT RAL.7016	1
3	2810 0168	RU ASPIRATORE -N- (P82.0564)	BLACK WHEEL	2
4	2810 0151	RU GEMELLATE PIVOT MAGGIORATE D.50 PERNO ACCIAIO	REVOLVING TWINS WHEELS REIFORCED D.50	2

DATA VALIDITA'
DATE OF VALIDITY

31/01/2019

DATA EMISSIONE
PRINTING DATE

31/01/2019

